

Rotating Lifting Point

RLP

The Gunnebo Industries lifting point range provide a solution for every lifting and rigging operation, enabling improved operational efficiency. To choose the right lifting point for an operation can be a challenge, since most lifting points can be used for several purposes. Safety is our highest priority, therefore has each sold RLP been proof loaded 2.5 times the WLL.

The Rotating Lifting Point (RLP) has been in Gunnebo Industries' range for many years and was improved with higher working load limits and a new design in 2015. The forged RLP bow rotates 360° and pivots 180°, making it strong, flexible and reliable. The RLP has an open D-ring to enable assembly of roundslings, master links or hooks directly to the lifting point. To disassembly the RLP is easy - fold the D-ring forward and push down to de-attach it from the housing. This makes it possible to inspect all parts as well as replacing the bolt with a long bolt version if needed. The hexagon bolt (RFID prepared) makes it easy to mount and dismount the RLP.



Easy to mount & dismount

- The hexagon bolt makes it easy to mount and dismount the RLP.

Rotates 360° & pivots 180°

- Making the RLP strong, flexible and reliable.

Open and spacious D-ring

- Easy to disassembly the RLP.
- Facilitates inspection of all parts as well as replacement of the bolt.
- Easy assembly of roundslings, master links or hooks directly to the lifting point.

Available with extra long bolt

- The RLP is available with extra long bolts up to 10xd allowing the RLP to be tailor fitted for each application.

Applications where the RLP is perfectly suited

✓ Tilting under load

Tilting occurs in many lifts from raising wall sections to turning tools. The RLP is designed for easy and smooth tilting in any operation.

✓ Single and Multiple part lift

When lifting with multiple parts the RLP will always be positioned correctly thanks to the tilting and rotating function. The RLP is also ideal for single part lift as the WLL is significantly higher when lifting vertically.

✓ Integrated combination

The unique open solution of the RLP allows extreme flexibility. By opening the RLP you can easily fit it directly to the thimble of wire rope sling, a roundsling, a master link or any other type of eye fitting (clamp, hook, etc.). Once the bolt is tightened the RLP is secured with no risk of accidentally opening.

Example of typical applications

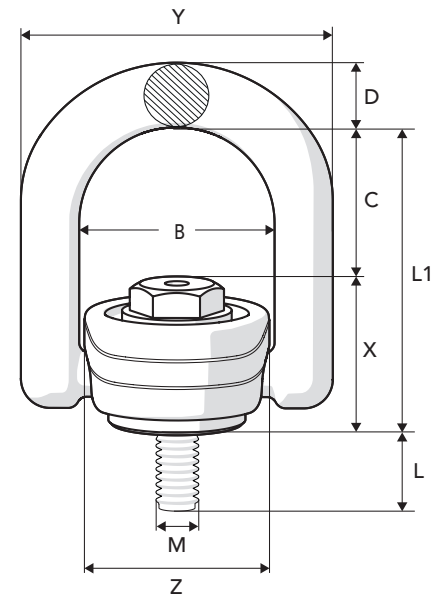
- Assembly of wind mill tower sections.
- Handling molds in injection molding plant.
- Spreader beam assemblies
- Lifting water pump for inspection in deep well pumping station.

Rotating Lifting Point RLP

Art. no.	Code	Dimensions in mm									Weight kgs
		B	C	D	L	L1	M	X	Y	Z	
Z101708	RLP-M8 x 1.25	42	35	12	16	62	8	27	64	Ø40	0.3
Z101710	RLP-M10 x 1.5	42	35	12	16	62	10	27	64	Ø40	0.3
Z101712	RLP-M12 x 1.75	57	46	19	25	88	12	42	91	Ø54	1.0
Z101716	RLP-M16 x 2	57	46	19	25	88	16	42	91	Ø54	1.0
Z101720	RLP-M20 x 2.5	83	55	28	36	110	20	55	133	Ø80	2.9
Z101724	RLP-M24 x 3	83	55	28	36	110	24	55	133	Ø80	2.9
Z101730	RLP-M30 x 3.5	114	70	34	58	148	30	78	182	Ø111	7.1
Z101736	RLP-M36 x 4	114	70	34	58	148	36	78	182	Ø111	7.3
Z101742	RLP-M42 x 4.5	149	91	40.4	81	190	42	99	229	Ø142	14.3
Z101748	RLP-M48 x 5	149	91	40.4	81	190	48	99	229	Ø142	14.5

RLP with UNC thread

Art. no.	Code	Dimensions in mm									M inch	Weight kgs
		B	C	D	L	L1	X	Y	Z			
Z101808	RLP-5/16"-18 UNC	42	35	12	16	62	27	64	Ø40	5/16"	0.3	
Z101810	RLP-3/8"-16 UNC	42	35	12	16	62	27	64	Ø40	3/8"	0.3	
Z101812	RLP-1/2"-13 UNC	57	46	19	25	88	42	91	Ø54	1/2"	1.0	
Z101816	RLP-5/8"-11 UNC	57	46	19	25	88	42	91	Ø54	5/8"	1.0	
Z101820	RLP-3/4"-10 UNC	83	55	28	36	110	55	133	Ø80	3/4"	2.9	
Z101821	RLP-7/8"-9 UNC	83	55	28	36	110	55	133	Ø80	7/8"	2.9	
Z101824	RLP 1"-8 UNC	83	55	28	36	110	55	133	Ø80	1"	2.9	
Z101830	RLP 1 1/4"-7 UNC	114	70	34	58	148	78	182	Ø111	1 1/4"	7.1	
Z101836	RLP 1 1/2"-6 UNC	114	70	34	58	148	78	182	Ø111	1 1/2"	7.3	
Z101842	RLP 1 3/4"-5 UNC	149	91	40.4	81	190	99	229	Ø142	1 3/4"	14.4	
Z101848	RLP 2"-4.5 UNC	149	91	40.4	81	190	99	229	Ø142	2"	14.7	



Working Load Limits* - RLP

No. of legs	Symmetric Load (tonnes)						Tightening torque		Spanner size	
	1		2		2 symmetric		3 & 4 symmetric		Tightening torque	Spanner size
	Angle β	0°	90°	0°	90°	0-45°	45-60°	0-45°		
RLP - M8 x 1.25	0.8	0.4	1.6	0.8	0.5	0.4	0.8	0.6	10 Nm	13 mm
RLP 5/16"-18 UNC	0.8	0.4	1.6	0.8	0.5	0.4	0.8	0.6	7 Ft.Lbs	1/2"
RLP - M10 x 1.5	1.2	0.7	2.4	1.4	0.9	0.7	1.4	1.0	15 Nm	13 mm
RLP 3/8"-16 UNC	1.2	0.65	2.4	1.3	0.9	0.6	1.3	0.9	11 Ft.Lbs	1/2"
RLP - M12 x 1.75	2.0	1.2	4.0	2.4	1.6	1.2	2.5	1.8	27 Nm	24 mm
RLP 1/2"-13 UNC	2.0	1.2	4.0	2.4	1.6	1.2	2.5	1.8	20 Ft.Lbs	15/16"
RLP - M16 x 2	3.2	2.0	6.4	4.0	2.8	2.0	4.2	3.0	60 Nm	24 mm
RLP 5/8"-11 UNC	3.2	2.0	6.4	4.0	2.8	2.0	4.2	3.0	44 Ft.Lbs	15/16"
RLP - M20 x 2.5	5.6	2.8	11.2	5.6	3.9	2.8	5.8	4.2	90 Nm	32 mm
RLP 3/4"-10 UNC	5.0	2.5	10.0	5.0	3.5	2.5	5.2	3.7	66 Ft.Lbs	1 5/16"
RLP 7/8"-9 UNC	5.6	2.8	11.2	5.6	3.9	2.8	5.8	4.2	66 Ft.Lbs	1 5/16"
RLP - M24 x 3	9.2	4.6	18.4	9.2	6.4	4.6	9.6	6.9	135 Nm	32 mm
RLP 1"-8 UNC	9.2	4.6	18.4	9.2	6.4	4.6	9.6	6.9	100 Ft.Lbs	1 5/16"
RLP - M30 x 3.5	12.0	6.0	24.0	12.0	8.4	6.0	12.6	9.0	270 Nm	55 mm
RLP 1 1/4"-7 UNC	12.0	6.0	24.0	12.0	8.4	6.0	12.6	9.0	200 Ft.Lbs	2 1/4"
RLP - M36 x 4	14.0	8.0	28.0	16.0	11.2	8.0	16.8	12.0	320 Nm	55 mm
RLP 1 1/2"-6 UNC	14.0	8.0	28.0	16.0	11.2	8.0	16.8	12.0	236 Ft.Lbs	2 1/4"
RLP - M42 x 4.5	16.0	14.0	32.0	28.0	19.6	14.0	29.4	21.0	600 Nm	75 mm
RLP 1 3/4"-5 UNC	16.0	14.0	32.0	28.0	19.6	14.0	29.4	21.0	440 Ft.Lbs	3"
RLP - M48 x 5	20.0	16.0	40.0	32.0	22.4	16.0	33.6	24.0	800 Nm	75 mm
RLP 2"-4.5 UNC	20.0	16.0	40.0	32.0	22.4	16.0	33.6	24.0	590 Ft.Lbs	3"

* Safety factor 4:1

Extra Long Bolt for RLP **

Art. no.	Bolt	Protrusion L (mm)	Weight (kgs)
Z1017081L	M8 x 1.25	101	0.06
Z1017101L	M10 x 1.5	101	0.08
Z1017121L	M12 x 1.75	80	0.14
Z1017161L	M16 x 2	80	0.20
Z1017201L	M20 x 2.5	86	0.46
Z1017241L	M24 x 3	86	0.50
Z1017301L	M30 x 3.5	300	2.40
Z1017361L	M36 x 4	300	3.00
Z1017421L	M42 x 4.5	301	5.00
Z1017481L	M48 x 5	301	6.00
Z1018081L	UNC 5/16"-18	101	0.06
Z1018101L	UNC 3/8"-16	101	0.07
Z1018121L	UNC 1/2"-13	80	0.16
Z1018161L	UNC 5/8"-11	80	0.20
Z1018201L	UNC 3/4"-10	86	0.44
Z1018211L	UNC 7/8"-9	86	0.50
Z1018241L	UNC 1"-8	86	0.60
Z1018301L	UNC 1 1/4"-7	300	2.50
Z1018361L	UNC 1 1/2"-6	300	3.30
Z1018421L	UNC 1 3/4"-5	301	5.40
Z1018481L	UNC 2"-4.5	301	6.40

** When using extra long bolt, make sure to use nut/washer of min. strength rating 10.9, ISO 898-1.